

R.F.	CHK.
D.R.	CHK.
REV. BY	CHK.
DESCRIPTION	
REVISIONS	

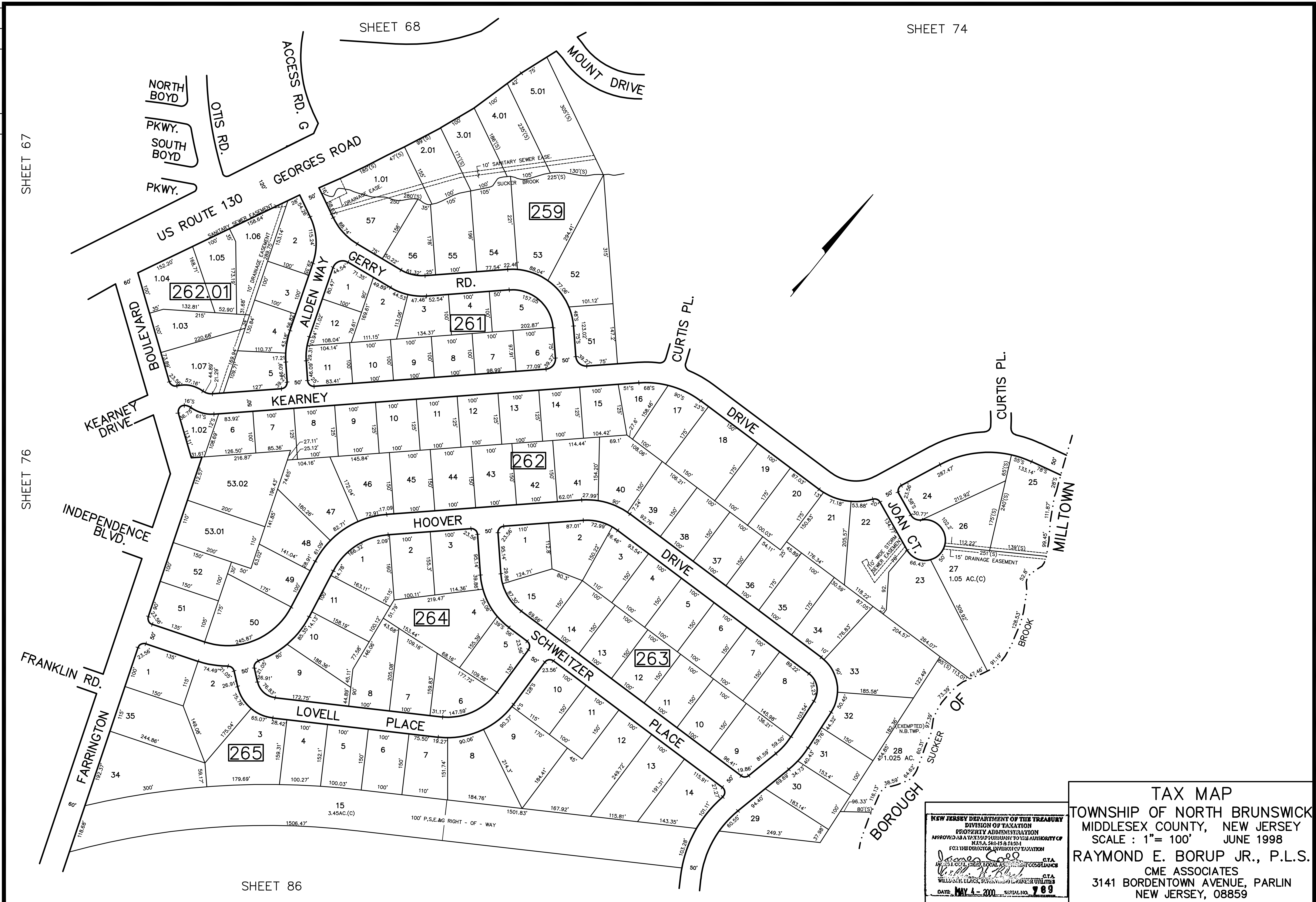
SHEET 67

SHEET 68

SHEET 74

SHEET 76

SHEET 86



NEW JERSEY DEPARTMENT OF THE TREASURY  
 DIVISION OF TAXATION  
 PROPERTY ADMINISTRATION  
 APPROVED AS A TAX MAP PURSUANT TO THE AUTHORITY OF  
 N.J.S.A. 54:15 & 54:24  
 FOR THE DIRECTOR, DIVISION OF TAXATION  
*James G. ...* C.T.A.  
*William E. ...* C.T.A.  
 DATE: MAY 4 - 2000 SERIAL NO. 789

**TAX MAP**  
 TOWNSHIP OF NORTH BRUNSWICK  
 MIDDLESEX COUNTY, NEW JERSEY  
 SCALE : 1" = 100' JUNE 1998  
 RAYMOND E. BORUP JR., P.L.S.  
 CME ASSOCIATES  
 3141 BORDENTOWN AVENUE, PARLIN  
 NEW JERSEY, 08859