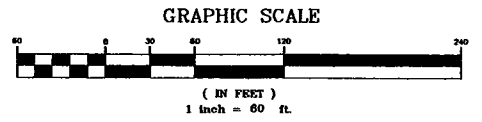


**KEY MAP**  
SCALE: 1"=2000'

**I-2 ZONE DATA**  
INDUSTRIAL DISTRICT

	REQUIRED	EXISTING PROVIDED	PROPOSED PROVIDED
MIN. LOT SIZE	3 ACRES	21.94 ACRES	N.C.
MIN. LOT WIDTH	350 FT.	638.56 FT.	N.C.
MIN. LOT DEPTH	350 FT.	239.50 FT.	N.C.
SETBACKS:			
FRONTYARD	100 FT.	270.0 FT.(N.B. BLVD.)N.C.	
SIDEYARD (ONE)	40 FT.	306.8 FT.	60 FT.
SIDEYARD (BOTH)	80 FT.	-	-
REARYARD	75 FT.	94.5 FT.	N.C.
ACCESSORY BUILDING:			
SIDEYARD	20 FT.	-	-
REARYARD	20 FT.	-	-
MAX. BLDG. HEIGHT	3 STRY./40 FT.	36 FT.	36 FT.
MAX. BLDG. COVERAGE	40 %	15.28%(46,150 SF)	25.78%(246,150 SF)
MAX. IMPERVIOUS CVC.	80 %	30.8%	48.3 %
PARKING:			
WAREHOUSE SPACE (1 SPACE/1000 SF.)	234,150 SF/1000 SF= 234 SPACES		234 SPACES
OFFICE SPACE (1 SPACE/150 SF.)	12,000 SF/150 SF= 80 SPACES		80 SPACES
TOTAL REQUIRED		267 SPACES	314 SPACES
TOTAL PROVIDED			
PARKING PROVIDED			185 SPACES
LANDBANKED PARKING PROVIDED			133 SPACES
PARKING PROVIDED W/LANDBANKED CONSTRUCTED			323 SPACES

NORTH BRUNSWICK  
**RECEIVED**  
FEB 28 2006  
ZONING OFFICE



FILE: 2291  
LDS NBP 10500227

THIS DRAWING IS FOR PERMIT PURPOSES ONLY. THIS BOX HAS BEEN CHECKED AND DATED.  
DATE: \_\_\_\_\_  
DRAWN BY: \_\_\_\_\_  
CHECKED BY: \_\_\_\_\_

**MENLO ENGINEERING ASSOCIATES, INC.**  
CIVIL ENGINEERS, LAND SURVEYORS AND PROFESSIONAL PLANNERS  
281 CLEVELAND AVENUE HIGHLAND PARK, NEW JERSEY 08804  
PHONE: (732) 846-8585 FAX: (732) 846-9439  
CERTIFICATE OF AUTHORIZATION: 24CA27951900

**BRUNSWICK LOGISTICS**  
NORTH BRUNSWICK TOWNSHIP, MIDDLESEX COUNTY, NEW JERSEY  
**OVERALL PLAN**

BLOCK 148 LOT 5.03 TAX MAP SHEET: 35 22 ACRES±  
DATE OF ISSUE: FEBRUARY 10, 2006  
SCALE: 1"=60'  
JOB #: 2005.102  
DWG #: OP-1  
SHEET # 2

**U.S. HIGHWAY ROUTE 1**  
(100.00' WIDE) (PUBLIC HIGHWAY)

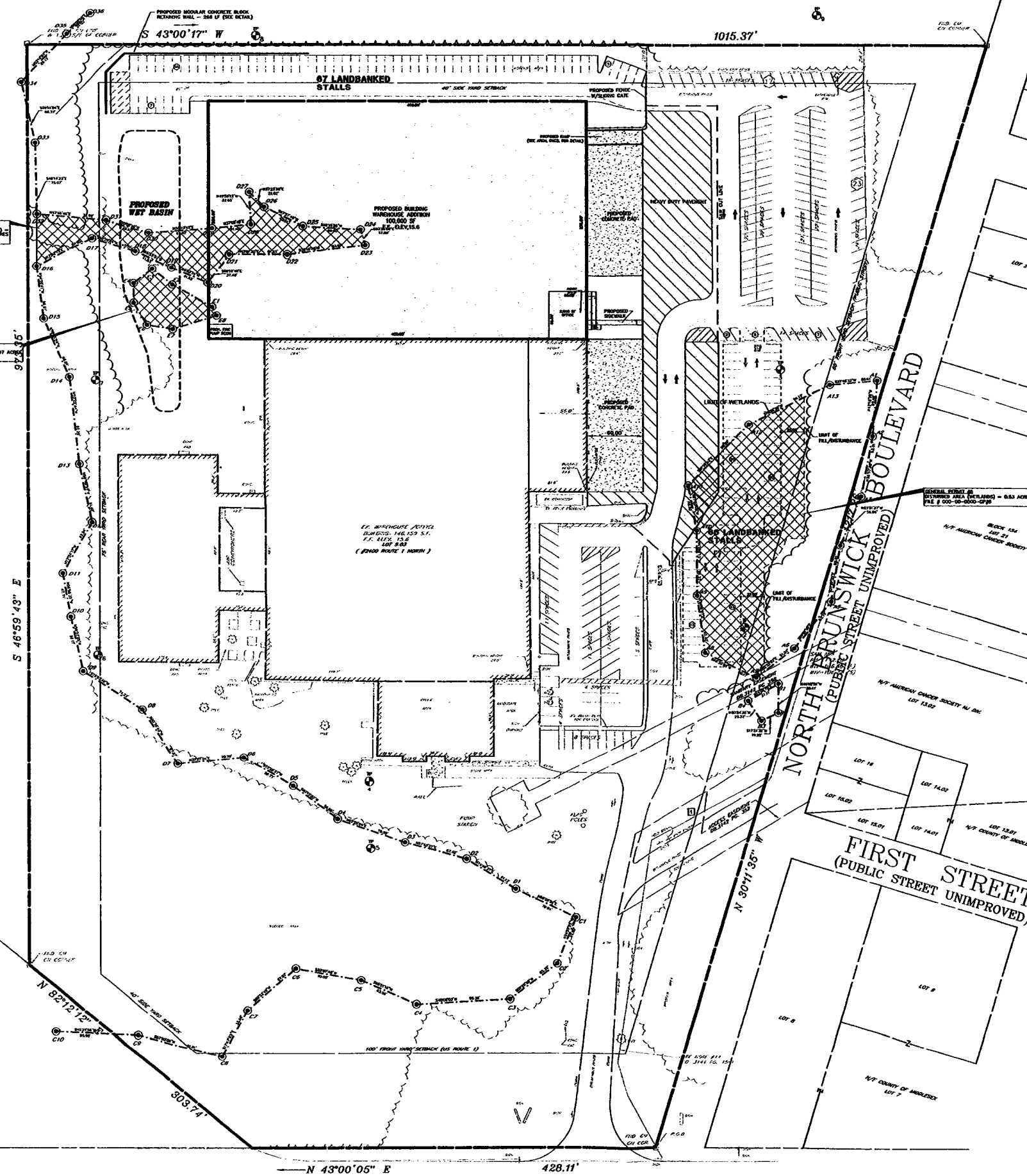
BLOCK 148 LOT 5.02 N.Y. COUNTY OF MIDDLESEX

BLOCK 148 LOT 5.01 N.Y. JOHNSON & JOHNSON

GENERAL PERMIT # 03-00-0000-0789

GENERAL PERMIT # 03-00-0000-0789

EX. WAREHOUSE FOOTPRINT DIMENSIONS: 146.153 S.F. F.F. 117.2 13.8 100' BAY (2400 ROUTE 1 NORTH)



TMU PUD C-2