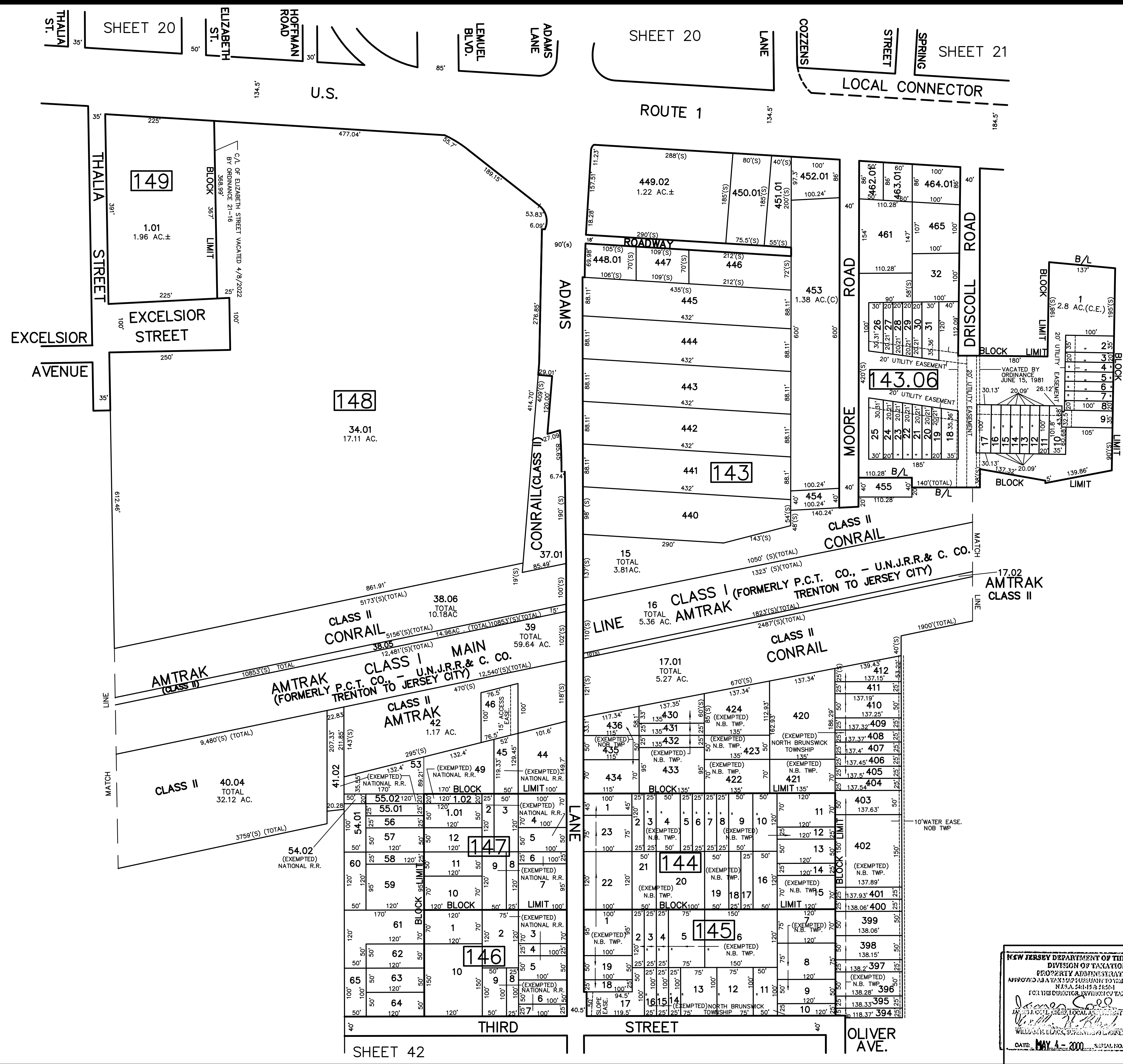


4/2023	BLK 148 L46 EASE ADDED	REVISION	DESCRIPTION	REV. BY	CHK.
4/2023	BLK 148 L46 EASE ADDED	REVISION	DESCRIPTION	REV. BY	CHK.
4/2023	BLK 148 L46 EASE ADDED	REVISION	DESCRIPTION	REV. BY	CHK.
4/2023	BLK 148 L46 EASE ADDED	REVISION	DESCRIPTION	REV. BY	CHK.
4/2023	BLK 148 L46 EASE ADDED	REVISION	DESCRIPTION	REV. BY	CHK.
4/2023	BLK 148 L46 EASE ADDED	REVISION	DESCRIPTION	REV. BY	CHK.
4/2023	BLK 148 L46 EASE ADDED	REVISION	DESCRIPTION	REV. BY	CHK.
4/2023	BLK 148 L46 EASE ADDED	REVISION	DESCRIPTION	REV. BY	CHK.
4/2023	BLK 148 L46 EASE ADDED	REVISION	DESCRIPTION	REV. BY	CHK.
4/2023	BLK 148 L46 EASE ADDED	REVISION	DESCRIPTION	REV. BY	CHK.

SHEET 33

SHEET 31



**TAX MAP**  
 TOWNSHIP OF NORTH BRUNSWICK  
 MIDDLESEX COUNTY, NEW JERSEY  
 SCALE : 1" = 100'  
 JUNE 1998  
 RAYMOND E. BORUP JR., P.L.S.  
 CME ASSOCIATES  
 3141 BORDENTOWN AVENUE, PARLIN  
 NEW JERSEY, 08859

NEW JERSEY DEPARTMENT OF THE TREASURY  
 DIVISION OF TAXATION  
 PROPERTY ADMINISTRATION  
 APPROVED AS A MAP SUBMITTAL TO THE AUTHORITY OF  
 THE TAX MAPS AND REVISIONS BOARD  
 FOR THE DISTRICT OF NORTH BRUNSWICK TOWNSHIP  
 DATE: MAY 4, 2000 SERIAL NO. 989