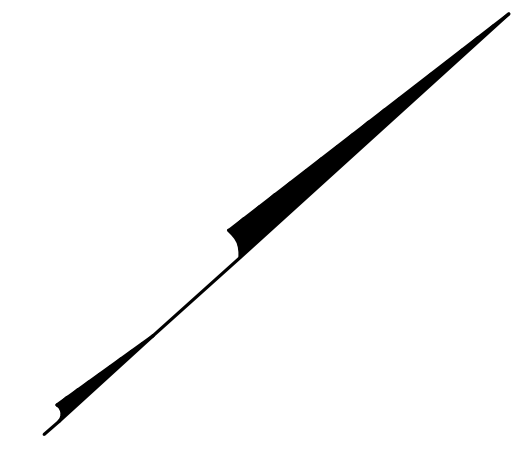
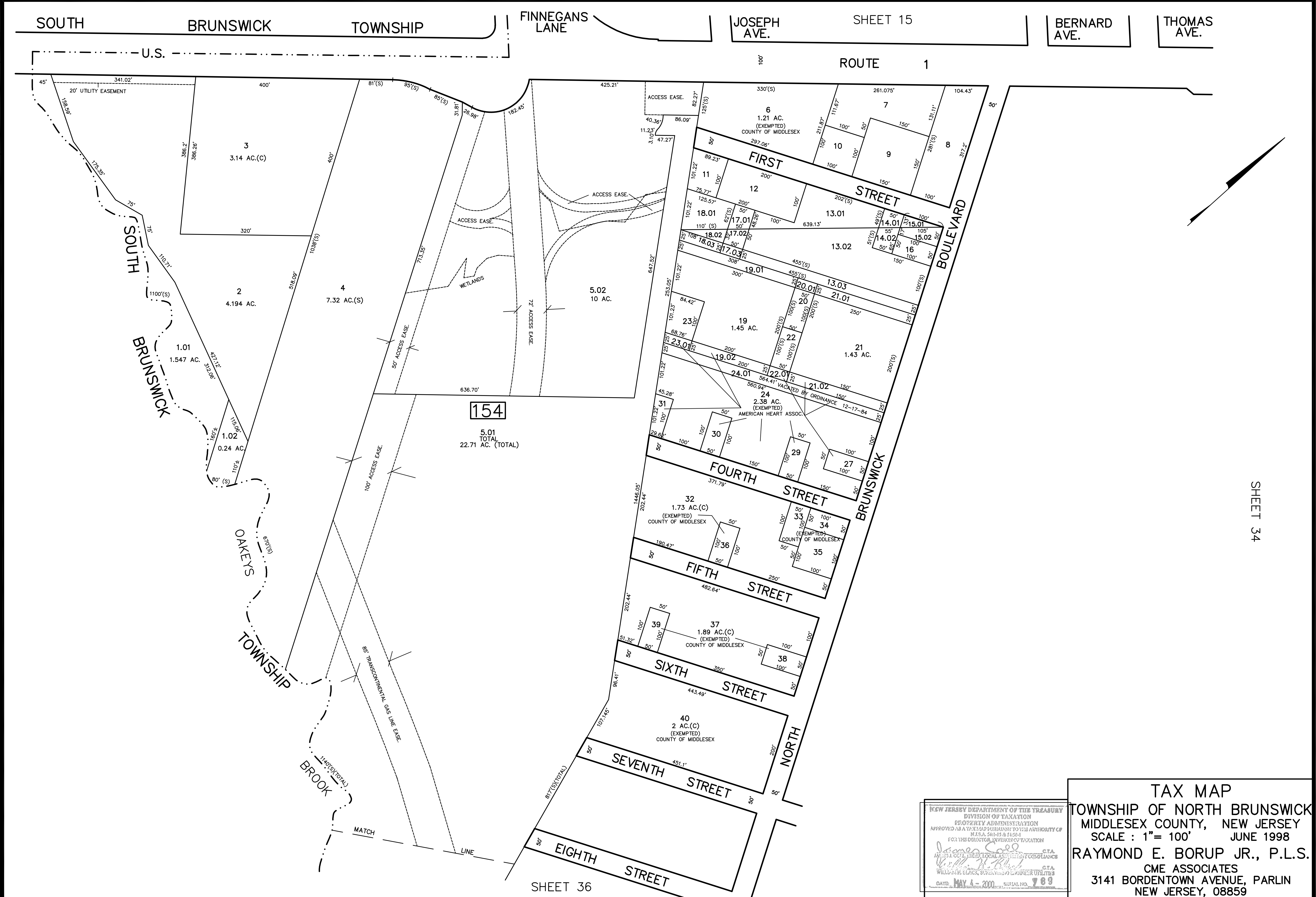


REV.	BY	CHK	DESCRIPTION
4/2003	R.R.		BLK 154 L13.02, L13.03, L14.02, L15.02, L16.02, L17.02, L18.02, L19.01, L20.01, L21.01, L22.02, L23.02
4/2007	R.R.		BLK 154 L21.01 CHG TO 21.02
4/2007	R.R.		BLK 154 LOTS 6, 32, 33, 34 EXEMPTED
4/2004	R.R.		BLK 154 LOTS 6, 32, 33, 34 EXEMPTED
			MIDDLESEX CITY ADDED
			REVISED



SHEET 34

SHEET 36

NEW JERSEY DEPARTMENT OF THE TREASURY  
 DIVISION OF TAXATION  
 PROPERTY ADMINISTRATION  
 APPROVED AS A TAX MAP PURSUANT TO THE AUTHORITY OF  
 N.J.S.A. 54:15 & 54:21  
 FOR THE DIRECTOR, DIVISION OF TAXATION  
*James S. ...* C.T.A.  
*William E. ...* C.T.A.  
 DATE: MAY 4 - 2000 SERIAL NO. 789

TAX MAP  
 TOWNSHIP OF NORTH BRUNSWICK  
 MIDDLESEX COUNTY, NEW JERSEY  
 SCALE : 1" = 100' JUNE 1998  
 RAYMOND E. BORUP JR., P.L.S.  
 CME ASSOCIATES  
 3141 BORDENTOWN AVENUE, PARLIN  
 NEW JERSEY, 08859