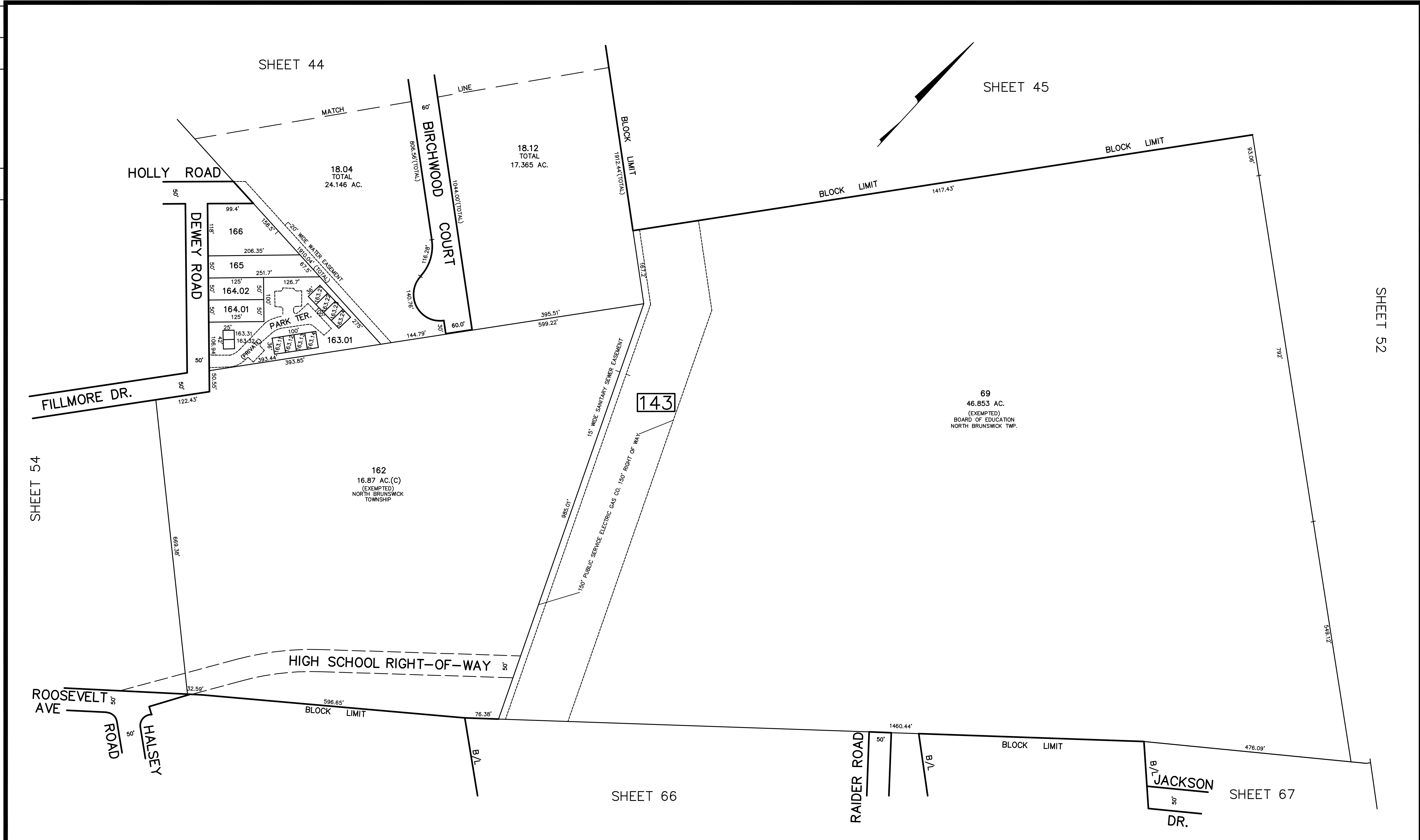


RR	REV. BY	CHK.
4/2023 5/2004	REVIS	DESCRIPTION
PART OF ROOSEVELT AVE VACATED LOTS 163, 164.03 SUBDIVISION		



TAX MAP
 TOWNSHIP OF NORTH BRUNSWICK
 MIDDLESEX COUNTY, NEW JERSEY
 SCALE : 1" = 100' JUNE 1998
 RAYMOND E. BORUP JR., P.L.S.
 CME ASSOCIATES
 3141 BORDENTOWN AVENUE, PARLIN
 NEW JERSEY, 08859

NEW JERSEY DEPARTMENT OF THE TREASURY
 DIVISION OF TAXATION
 PROPERTY ADMINISTRATION
 APPROVED AS A TAX MAP PURSUANT TO THE AUTHORITY OF
 N.J.S.A. 17:27 & 17:28
 FOR THE DIRECTOR, DIVISION OF TAXATION
James S. ... C.T.A.
... C.T.A.
 WILLIAM BLANK, SUPERVISOR OF ENGINEERING UTILITIES
 DATE: MAY 4 - 2000 SERIAL NO. 769

SHEET 54

SHEET 44

SHEET 45

SHEET 52

SHEET 66

SHEET 67