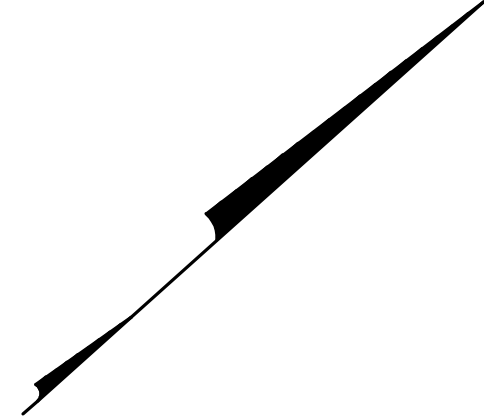
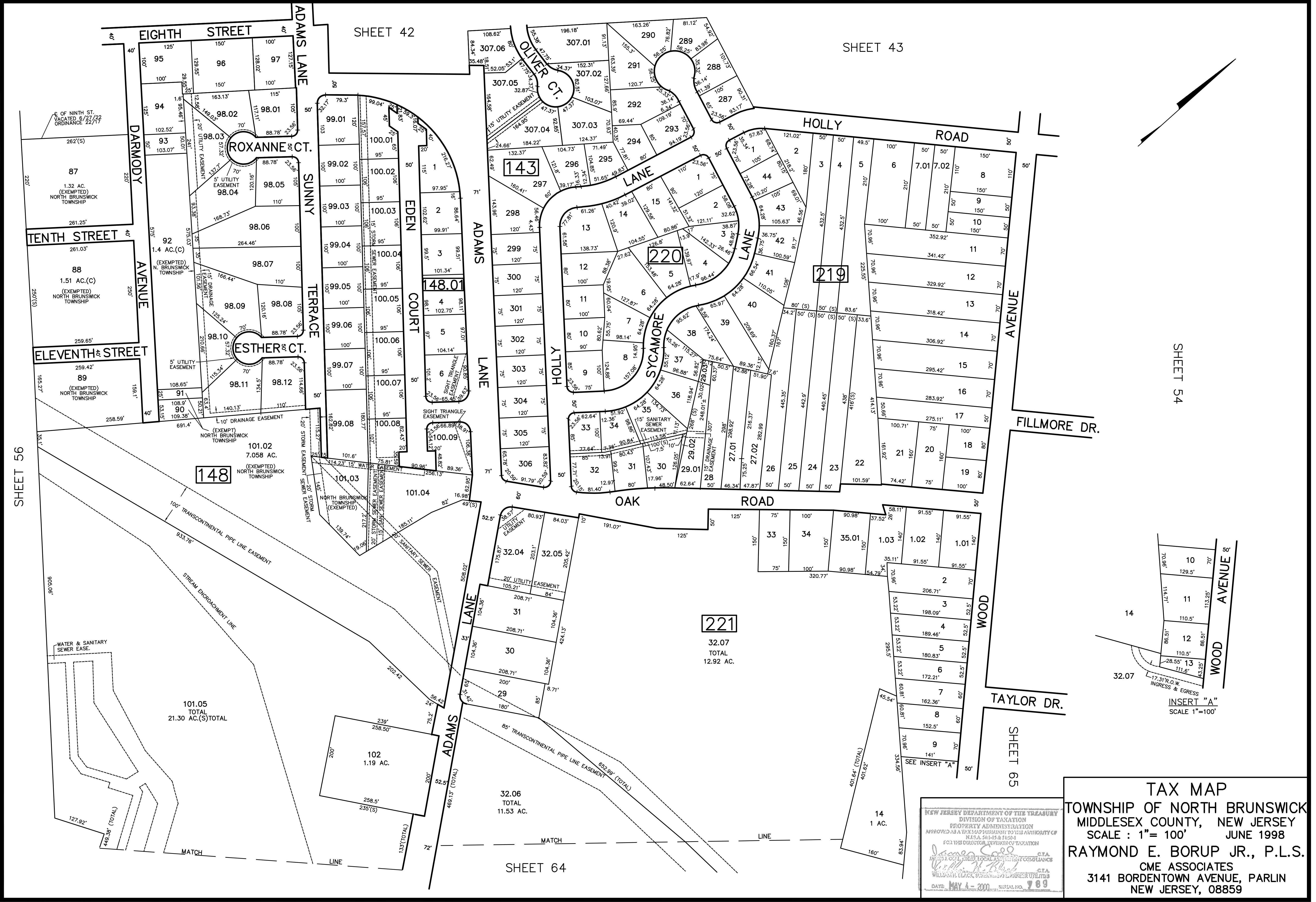
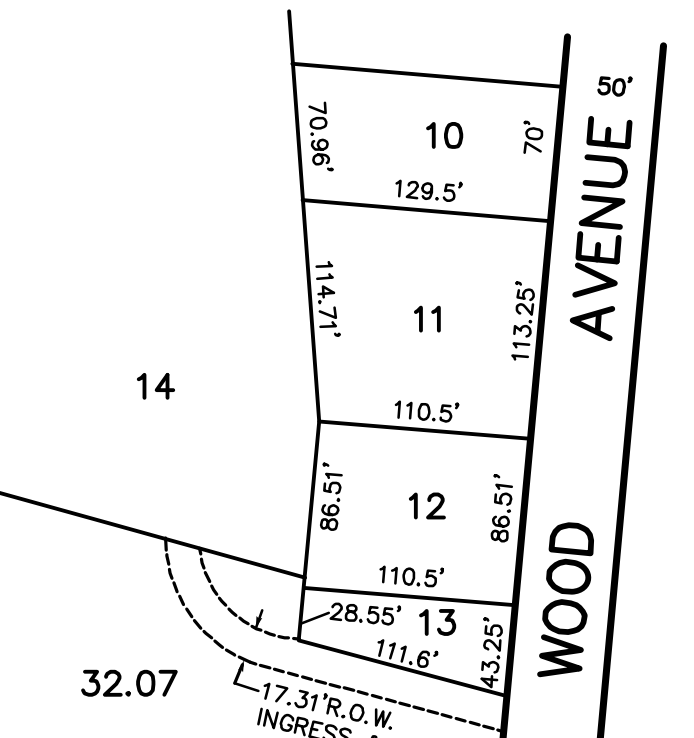


R.R.	DESCRIPTION	REV. BY	CHK.
3/2023	PART OF NINTH ST VACATED		
3/2011	BLK 148 L 101.05 ROW TAKING		
3/2008	BLK 221 LOT 1.35 SUBDIV		
9/2004	BLK 219 LOT 101 R.O.W.		
4/2004	BLK 219 LOT 27 SUBDIVISION		
4/2004	NEW LOTS 27.01, 27.02		



SHEET 54



NEW JERSEY DEPARTMENT OF THE TREASURY  
DIVISION OF TAXATION  
PROPERTY ADMINISTRATION  
APPROVED AS A TAX MAP PURSUANT TO THE AUTHORITY OF  
N.J.S.A. 54:15-1 & 15-91  
FOR THE DIRECTOR, DIVISION OF TAXATION

*James S. Cole* C.T.A.  
MAY 4 - 2000 SERIAL NO. 789

**TAX MAP**  
TOWNSHIP OF NORTH BRUNSWICK  
MIDDLESEX COUNTY, NEW JERSEY  
SCALE : 1"= 100' JUNE 1998  
**RAYMOND E. BORUP JR., P.L.S.**  
CME ASSOCIATES  
3141 BORDENTOWN AVENUE, PARLIN  
NEW JERSEY, 08859