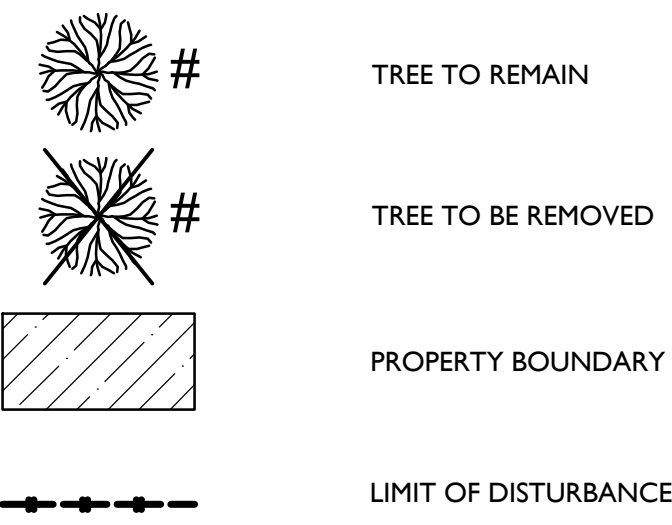


TREE PLAN LEGEND



TREE INVENTORY NOTES

- 1. THIS PLAN IS TO BE USED FOR TREE LOCATION AND REMOVAL PURPOSES ONLY.
- 2. REFER TO TREE DATA SHEET (TD) FOR TREE SPECIES, SIZES, AND TREE CONDITION NOTES FOR TREES INVENTORIED.
- 3. REFER TO THIS SHEET FOR REMOVAL AND REPLACEMENT CALCULATIONS.
- 4. TREES 18' AND GREATER WERE INVENTORIED USING GPS METHODS. INVENTORY WAS CONDUCTED BY MASER CONSULTING ON AUGUST 31, 2020, SEPTEMBER 1, 2020, AND SEPTEMBER 4TH, 2020.
- 5. TREES ARE REQUIRED TO BE REPLACED AT A 1 TO 1 RATIO, AS PER ORDINANCE 130-79 AND THE REDEVELOPMENT ORDINANCE 2.6.5 B.1-4.

TREE REMOVAL CALCULATIONS

A TOTAL OF 358 TREES ARE TO BE REMOVED FROM THE SITE. A REPLACEMENT RATE OF 1:1 IS REQUIRED AS PER ORDINANCE 130-71 AND REDEVELOPMENT ORDINANCE 2.6.5 B.1-4. REPLACEMENT TREES SHALL BE A MINIMUM OF 2" CALIPER FOR DECIDUOUS TREES AND 6" TALL THINLIMB FOR ALL EVERGREEN TREES AS PER REDEVELOPMENT ORDINANCE 2.6.5 B.1-4.

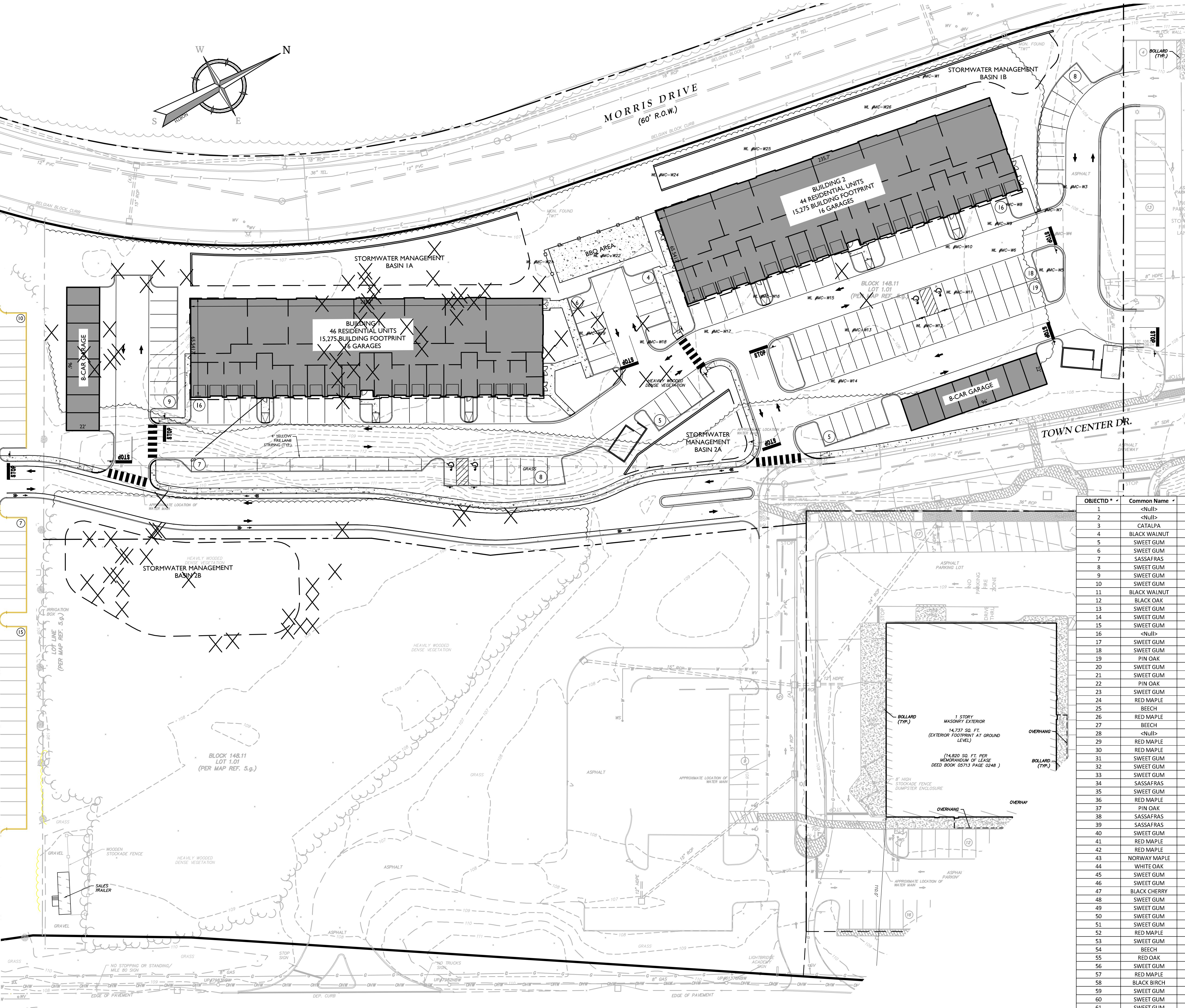
REQUIRED: 314 TREES X 1 REPLACEMENT TREE + 44 TREES FROM INACCESSIBLE AREA (SEE LIST OF INACCESSIBLE AREAS BELOW)

= 358 DECIDUOUS TREES AT 2" CAL AND 6" TALL MIN. EVERGREEN TREES REQUIRED

PROVIDED: 125 DECIDUOUS TREES AT 2" MIN. CAL. PROVIDED
233 EVERGREEN TREES AT 6" HEIGHT MIN. PROVIDED
378 TOTAL TREES PROVIDED

SEE LANDSCAPE PLAN FOR TREE REPLACEMENT AND PLANT QUANTITIES.

SCALE: 1" = 30'



OBJECTID	Common Name	Size - Inches	MULTI LDR	MULTI SIZE - 1	MULTI SIZE - 2	QUAL FORM	Remarks	Additional Comments
2	<Null>	6	<Null>	<Null>	<Null>	EXTREMELY POOR	<Null>	Persimmon, dying, early leaf loss, vine covered
3	CATALPA	6	YES	8	2	OK	LEANING	Codominant, full canopy
4	BLACK WALNUT	19	<Null>	<Null>	<Null>	<Null>	<Null>	Poor condition, leaning, codominant, vine covered
5	SWEET GUM	6	<Null>	<Null>	<Null>	<Null>	<Null>	Extremely poor, vine strangulation, sucker growth, no lower canopy
6	SWEET GUM	6	YES	13	15	<Null>	<Null>	Oh, sparse canopy, no lower branches, vines
7	SASSAFRAS	9	<Null>	<Null>	<Null>	POOR	LEANING	Contorted, sparse canopy
8	SWEET GUM	8	<Null>	<Null>	<Null>	EXTREMELY POOR	MASSED W/ VINES	Sparse canopy, no lower branches
9	SWEET GUM	6	<Null>	<Null>	<Null>	EXTREMELY POOR	DEAD BRANCHES	Sucker growth, dying, sparse canopy
10	SWEET GUM	9	<Null>	<Null>	<Null>	POOR	ENCUMBERED BARK	Sparse canopy, no lower branches
11	BLACK WALNUT	13	<Null>	<Null>	<Null>	EXTREMELY POOR	DEAD BRANCHES	Sparse canopy, dying, no lower branches
12	BLACK OAK	12	<Null>	<Null>	<Null>	<Null>	<Null>	Extremely poor, leaning, vine covered, sparse canopy
13	SWEET GUM	7	<Null>	<Null>	<Null>	EXTREMELY POOR	<Null>	Extremely poor, dead main leader, leaning, contorted
14	SWEET GUM	6	<Null>	<Null>	<Null>	POOR	<Null>	Contorted, vine covered, no lower branches
15	SWEET GUM	8	<Null>	<Null>	<Null>	EXTREMELY POOR	<Null>	Codominant, dead branches, vine covered
16	<Null>	7	<Null>	<Null>	<Null>	EXTREMELY POOR	MASSED W/ VINES	Persimmon, sparse canopy, dead branches, leaning
17	SWEET GUM	6	YES	9	5	POOR	MASSED W/ VINES	Sparse canopy, broken branches
18	SWEET GUM	6	<Null>	<Null>	<Null>	OK	<Null>	Broken branches, sparse canopy, and sucker growth
19	PIN OAK	6	<Null>	<Null>	<Null>	OK	<Null>	Broken branches, no lower branches, full canopy
20	SWEET GUM	6	<Null>	<Null>	<Null>	POOR	<Null>	Sparse canopy, no lower branches, has vines
21	SWEET GUM	6	<Null>	<Null>	<Null>	OK	NO LOWER BRANCHES	Sucker growth, broken branches, vines
22	PIN OAK	10	<Null>	<Null>	<Null>	EXTREMELY POOR	DEAD BRANCHES	Broken branches, sparse canopy
23	SWEET GUM	6	<Null>	<Null>	<Null>	POOR	LEANING	Broken branches, vines
24	RED MAPLE	35	<Null>	<Null>	<Null>	GOOD	<Null>	Exposed roots, no lower branches, good form
25	BEECH	<Null>	YES	7	18	GOOD	<Null>	Exposed roots, full canopy, contorted
26	RED MAPLE	9	<Null>	<Null>	<Null>	POOR	NO LOWER BRANCHES	Massed with vines, dead branches
27	BEECH	16	<Null>	<Null>	<Null>	VERY POOR	<Null>	Codominant, full canopy, good form
28	<Null>	<Null>	<Null>	<Null>	<Null>	OK	STRESS CRACKS	Contorted, good canopy
29	RED MAPLE	26	<Null>	<Null>	<Null>	OK	<Null>	Contorted, broken branches, unbalanced canopy
30	RED MAPLE	27	<Null>	<Null>	<Null>	POOR	<Null>	Dead main leader, codominant, wounds
31	SWEET GUM	23	<Null>	<Null>	<Null>	OK	NO LOWER BRANCHES	Broken limbs, exposed roots
32	SWEET GUM	6	<Null>	<Null>	<Null>	POOR	STRESS CRACKS	Leaning, sparse canopy
33	SWEET GUM	7	<Null>	<Null>	<Null>	POOR	DEAD BRANCHES	Broken branches, vine covered
34	SASSAFRAS	8	<Null>	<Null>	<Null>	POOR	LEANING	Contorted, sparse canopy
35	SWEET GUM	15	<Null>	<Null>	<Null>	EXTREMELY POOR	DEAD BRANCHES	Sparse canopy, no lower branches
36	RED MAPLE	35	<Null>	<Null>	<Null>	EXTREMELY POOR	LEANING	Dead branches, dead main leader
37	PIN OAK	31	<Null>	<Null>	<Null>	POOR	DEAD BRANCHES	Vines, broken branches
38	SASSAFRAS	9	<Null>	<Null>	<Null>	POOR	DEAD BRANCHES	Broken branches, vines
39	SASSAFRAS	12	<Null>	<Null>	<Null>	POOR	<Null>	No lower branches, vines
40	SWEET GUM	24	<Null>	<Null>	<Null>	OK	OPEN WOUNDS	Full canopy, broken branches
41	RED MAPLE	13	YES	13	5	EXTREMELY POOR	DEAD BRANCHES	Broken branches, contorted
42	RED MAPLE	18	<Null>	<Null>	<Null>	EXTREMELY POOR	DEAD BRANCHES	Dead main leader, sucker growth
43	NORWAY MAPLE	<Null>	YES	16	26	POOR	OPEN WOUNDS	Scars, contorted
44	WHITE OAK	22	<Null>	<Null>	<Null>	OK	LEANING	Contorted, sparse canopy
45	SWEET GUM	10	<Null>	<Null>	<Null>	EXTREMELY POOR	LEANING	Sparse canopy, dead branches
46	SWEET GUM	<Null>	YES	8	13	POOR	VINES	Contorted, unbalanced
47	BLACK CHERRY	9	<Null>	<Null>	<Null>	EXTREMELY POOR	LEANING	Codominant, dead branches
48	SWEET GUM	15	<Null>	<Null>	<Null>	POOR	NO LOWER BRANCHES	Sparse canopy, broken branches
49	SWEET GUM	17	<Null>	<Null>	<Null>	EXTREMELY POOR	DEAD BRANCHES	Broken branches, sparse canopy
50	SWEET GUM	16	<Null>	<Null>	<Null>	EXTREMELY POOR	DEAD BRANCHES	Broken branches, sparse canopy
51	SWEET GUM	16	<Null>	<Null>	<Null>	POOR	NO LOWER BRANCHES	Broken branches, sparse canopy
52	RED MAPLE	<Null>	YES	16	9	EXTREMELY POOR	OPEN WOUNDS	Broken main leader, sparse canopy
53	SWEET GUM	9	<Null>	<Null>	<Null>	EXTREMELY POOR	LEANING	Contorted, dead branches
54	BEECH	<Null>	YES	19	7	OK	CROSSING BRANCHES	Full canopy, sucker growth
55	RED OAK	27	<Null>	<Null>	<Null>	OK	<Null>	Sparse canopy, exposed roots
56	SWEET GUM	17	<Null>	<Null>	<Null>	OK	<Null>	Sparse canopy, broken branches, exposed roots
57	RED MAPLE	19	YES	19	4	POOR	OPEN WOUNDS	Broken branches, unbalanced
58	BLACK BIRCH	9	<Null>	<Null>	<Null>	EXTREMELY POOR	DEAD BRANCHES	Exposed roots, sparse canopy
59	SWEET GUM	7	<Null>	<Null>	<Null>	EXTREMELY POOR	DEAD BRANCHES	Broken branches, sparse canopy
60	SWEET GUM	7	<Null>	<Null>	<Null>	EXTREMELY POOR	DEAD BRANCHES	Broken branches, sparse canopy
61	SWEET GUM	<Null>	6	<Null>	<Null>	EXTREMELY POOR	DEAD BRANCHES	Broken branches, sparse canopy
62	TULIP TREE	6	<Null>	<Null>	<Null>	OK	UNBALANCED CANOPY	Sparse canopy, leaning
63	BLACK BIRCH	6	<Null>	<Null>	<Null>	POOR	LEANING	Scared, sparse canopy
64	BEECH	35	<Null>	<Null>	<Null>	EXTREMELY POOR	DEAD BRANCHES	Broken branches, leaning
65	RED MAPLE	<Null>	YES	14	9	POOR	LEANING	Unbalanced, infestation
66	SWEET GUM	10	<Null>	<Null>	<Null>	POOR	DEAD BRANCHES	Vines, sparse canopy
67	RED MAPLE	10	<Null>	<Null>	<Null>	POOR	DEAD BRANCHES	Wounds, unbalanced canopy
68	HICKORY	11	<Null>	<Null>	<Null>	OK	UNBALANCED CANOPY	Exposed roots, full canopy
69	RED MAPLE	41	<Null>	<Null>	<Null>	OK	<Null>	Exposed roots, full canopy, codominant
70	BEECH	7	<Null>	<Null>	<Null>	GOOD	<Null>	Full canopy, contorted, broken branches
71	RED MAPLE	9	<Null>	<Null>	<Null>	EXTREMELY POOR	<Null>	Dying, sparse canopy, no lower branches
72	BEECH	11	<Null>	<Null>	<Null>	OK	<Null>	Full canopy, contorted, sucker growth
73	RED MAPLE	<Null>	YES	15	9	EXTREMELY POOR	DEAD BRANCHES	Dying, sucker growth
74	HICKORY	11	<Null>	<Null>	<Null>	EXTREMELY POOR	DEAD BRANCHES	Broken branches, vines, wounds
75	RED MAPLE	23	<Null>	<Null>	<Null>	POOR	DEAD BRANCHES	Broken branches, contorted
76	RED MAPLE	13	<Null>	<Null>	<Null>	POOR	DEAD BRANCHES	Premature leaf loss, codominant
77	SWEET GUM	7	<Null>	<Null>	<Null>	POOR	DEAD BRANCHES	Sparse canopy, broken branches, unbalanced
78	SWEET GUM	14	<Null>	<Null>	<Null>	EXTREMELY POOR	DEAD BRANCHES	No lower branching, vines
79	SWEET GUM	14	<Null>	<Null>	<Null>	EXTREMELY POOR	DEAD BRANCHES	No lower branches, sparse canopy
80	SWEET GUM	13	<Null>	<Null>	<Null>	EXTREMELY POOR	DEAD BRANCHES	No lower branches, sparse canopy
81	SWEET GUM	17	<Null>	<Null>	<Null>	POOR	DEAD BRANCHES	Vines, sparse canopy
82	RED MAPLE	6	<Null>	<Null>	<Null>	EXTREMELY POOR	<Null>	Dead main leader, broken branches, sparse canopy
83	BEECH	7	<Null>	<Null>	<Null>	OK	<Null>	Full canopy, exposed roots, broken branches
84	BEECH	7	<Null>	<Null>	<Null>	OK	<Null>	Full canopy, broken branches, contorted
85	SWEET GUM	27	<Null>	<Null>	<Null>	POOR TO OK	LEANING	Exposed roots, no lower branches
86	SWEET GUM	15	<Null>	<Null>	<Null>	POOR TO OK	NO LOWER BRANCHES	<Null>
87	SWEET GUM	10	<Null>	<Null>	<Null>	POOR TO OK	NO LOWER BRANCHES	<Null>
88	RED MAPLE	14	<Null>	<Null>	<Null>	POOR	DEAD BRANCHES	<Null>
89	RED MAPLE	22	<Null>	<Null>	<Null>	EXTREMELY POOR	NO LOWER BRANCHES	<Null>
90	RED MAPLE	13	<Null>	<Null>	<Null>	EXTREMELY POOR	NO LOWER BRANCHES	<Null>
91	RED MAPLE	21	<Null>	<Null>	<Null>	POOR	NO LOWER BRANCHES	<Null>
92	RED MAPLE	25	<Null>	<Null>	<Null>	POOR	NO LOWER BRANCHES	<Null>
93	RED MAPLE	21	<Null>	<Null>	<Null>	POOR	DEAD BRANCHES	<Null>

U.S. HIGHWAY ROUTE NO. 130
(a.k.a. GEORGES ROAD) (a.k.a. N.J.S.H. ROUTE 25)
(VARIABLE WIDTH R.O.W.)

www.colliersengineering.com
Copyright © 2021 Colliers Engineering & Design, Inc. All rights reserved. The drawing and all the information contained herein is authorized for use only by the party to whom it was prepared and is not to be copied, revised, altered, or used for any other purpose without the express written consent of Colliers Engineering & Design.

Doing Business as **MASER**

811 PROTECT YOURSELF
ALL STATES REQUIRE NOTIFICATION OF EGRESS, UTILITIES, OR ANY OTHER SERVICE BEFORE YOU EXCAVATE OR DIG. CALL 811 FOR STATE-SPECIFIC DIRECT PHONE NUMBERS. VISIT: WWW.CALL811.COM

REV	DATE	DESCRIPTION

REV	DATE	DESCRIPTION

GERALD J. DeFELICIS
NEW JERSEY LICENSED
LANDSCAPE ARCHITECT - LICENSE NUMBER A506971

**PRELIMINARY & FINAL
MAJOR SITE PLAN**
FOR
**AMARANTH AT
NORTH BRUNSWICK
PHASE 2**

**BLOCK 148.11
LOT 1.01
TOWNSHIP OF
NORTH BRUNSWICK
MIDDLESEX COUNTY
NEW JERSEY**

Colliers HQ/MD/DEL (Headquarters)
101 Crawford Corner Road,
Suite 3400
Holmdel, NJ 07733
Phone: 732.983.1950
Colliers Engineering & Design, Inc.
DOING BUSINESS AS MASER CONSULTING

SCALE: AS SHOWN	DATE: 5/23/23	DRAWN BY: EC	CHECKED BY: JA
PROJECT NUMBER: 170019498	DRAWING NAME: C-TREE		

TREE INVENTORY

NOTE: DO NOT SCALE DRAWINGS FOR CONSTRUCTION.