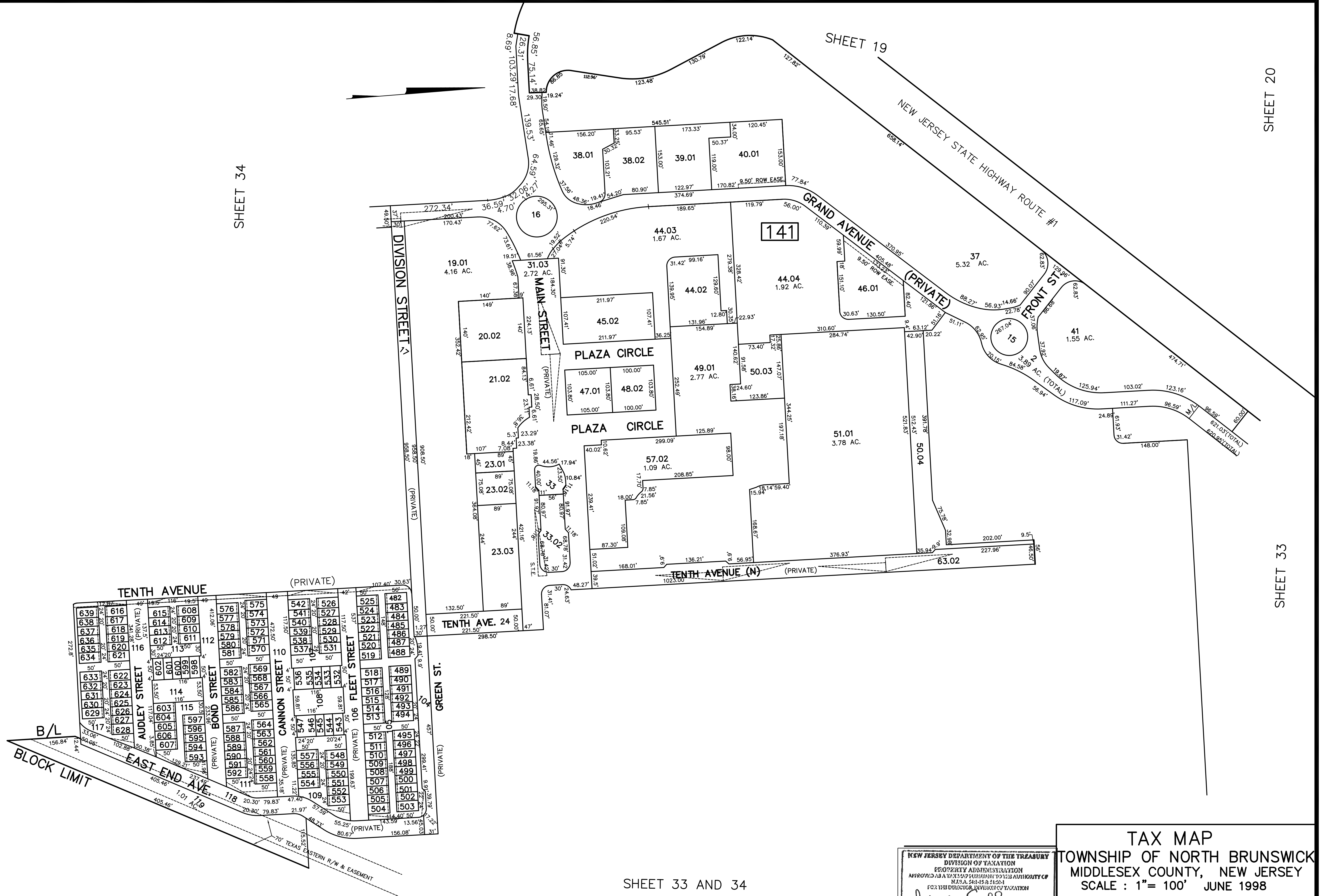


REV.	BY	CHK.	DESCRIPTION
3/2024			BL 141 NEW L 20.02.21.02.31.02, T.M. 33.33.02.36.01.35-40.44.01.45.01, 41-46.57.01.48-50.06.03.03, 51-56.57.01.58-60.06.03.03
2/2017			BL 141 L20.01.21.01.31.01 SUBDIV NEW L 20.02.21.02.31.02
2/2016			NEW L 20.02.21.02.31.02 SUBDIV PHASE 1C, 1D & FINAL SUBDIV
2/2015			LOTS 19.01-141.02 ADDED BLK 141 L&P SUBDIVISION



SHEET 33 AND 34

NEW JERSEY DEPARTMENT OF THE TREASURY  
DIVISION OF TAXATION  
PROPERTY ADMINISTRATION  
APPROVED AS A VARYING LOCAL ASSESSMENT COMPLIANCE  
N.J.S.A. 54:15 & 54:21  
FOR THE DIRECTOR, DIVISION OF TAXATION

*James C. Rao* C.T.A.  
*William E. Black* C.T.A.  
WILLIAM E. BLACK, SUPERVISOR OF ENGINEER UTILITIES

DATE: MAY 4, 2000 SERIAL NO. 789

TAX MAP  
TOWNSHIP OF NORTH BRUNSWICK  
MIDDLESEX COUNTY, NEW JERSEY  
SCALE: 1" = 100' JUNE 1998  
RAYMOND E. BORUP JR., P.L.S.  
CME ASSOCIATES  
3141 BORDENTOWN AVENUE, PARLIN  
NEW JERSEY, 08859