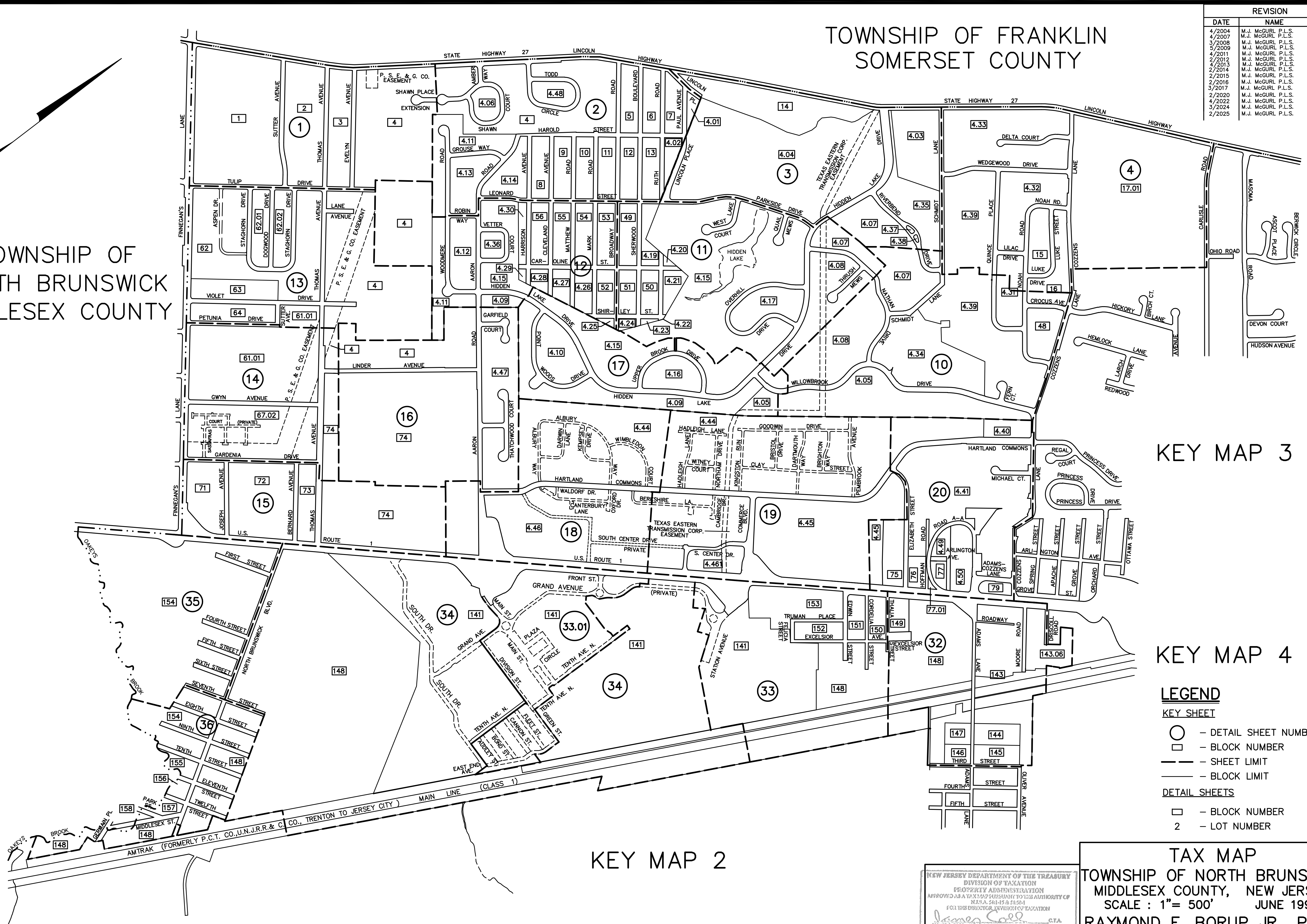


REVISION		
DATE	NAME	L.S. NO.
4/2004	M.J. MCGURL P.L.S.	38338
4/2007	M.J. MCGURL P.L.S.	38338
3/2008	M.J. MCGURL P.L.S.	38338
5/2009	M.J. MCGURL P.L.S.	38338
4/2011	M.J. MCGURL P.L.S.	38338
2/2012	M.J. MCGURL P.L.S.	38338
4/2013	M.J. MCGURL P.L.S.	38338
2/2014	M.J. MCGURL P.L.S.	38338
2/2015	M.J. MCGURL P.L.S.	38338
2/2016	M.J. MCGURL P.L.S.	38338
3/2017	M.J. MCGURL P.L.S.	38338
2/2020	M.J. MCGURL P.L.S.	38338
4/2022	M.J. MCGURL P.L.S.	38338
3/2024	M.J. MCGURL P.L.S.	38338
2/2025	M.J. MCGURL P.L.S.	38338

TOWNSHIP OF FRANKLIN SOMERSET COUNTY

TOWNSHIP OF
SOUTH BRUNSWICK
MIDDLESEX COUNTY



KEY MAP 3

KEY MAP 4

KEY MAP 2

LEGEND

- KEY SHEET
- - DETAIL SHEET NUMBER
 - - BLOCK NUMBER
 - - SHEET LIMIT
 - - BLOCK LIMIT
- DETAIL SHEETS
- - BLOCK NUMBER
 - 2 - LOT NUMBER

NEW JERSEY DEPARTMENT OF THE TREASURY
DIVISION OF TAXATION
PROPERTY ADMINISTRATION
APPROVED AS A TAX MAP PURSUANT TO THE AUTHORITY OF
N.J.S.A. 54:15-8 & 54:15-9
FOR THE DIRECTOR, DIVISION OF TAXATION

James S. ... C.T.A.
... C.T.A.
DATE: MAY 4 - 2000 SERIAL NO. 789

TAX MAP
TOWNSHIP OF NORTH BRUNSWICK
MIDDLESEX COUNTY, NEW JERSEY
SCALE : 1" = 500' JUNE 1998
RAYMOND E. BORUP JR., P.L.S.
CME ASSOCIATES
3141 BORDENTOWN AVENUE, PARLIN
NEW JERSEY, 08859