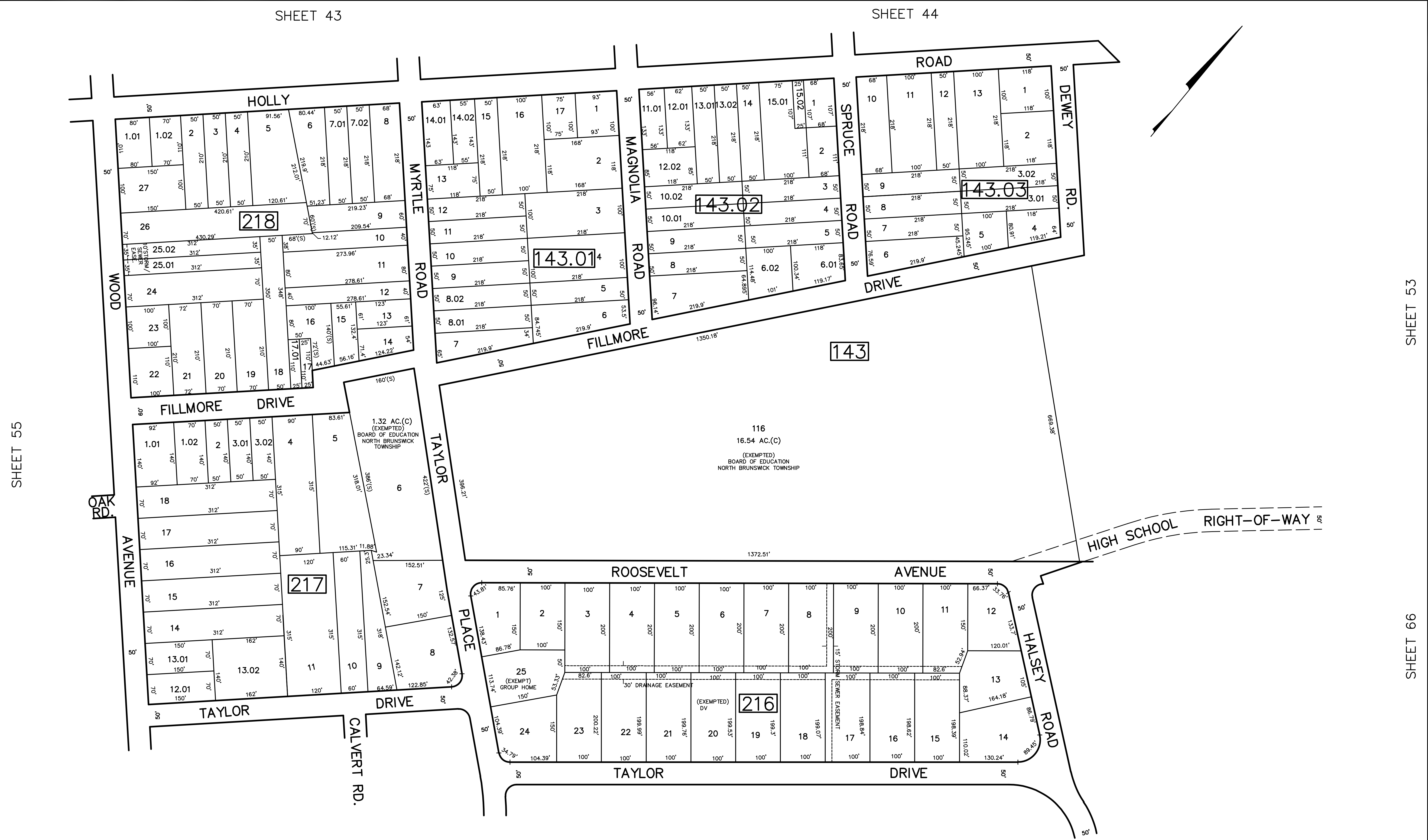


SHEET 43

SHEET 44

REV.	BY	DESCRIPTION
1	DK	REVISED
2	DK	REVISED
3	DK	REVISED
4	DK	REVISED
5	DK	REVISED
6	DK	REVISED
7	DK	REVISED
8	DK	REVISED
9	DK	REVISED
10	DK	REVISED
11	DK	REVISED
12	DK	REVISED
13	DK	REVISED
14	DK	REVISED
15	DK	REVISED
16	DK	REVISED
17	DK	REVISED
18	DK	REVISED
19	DK	REVISED
20	DK	REVISED
21	DK	REVISED
22	DK	REVISED
23	DK	REVISED
24	DK	REVISED
25	DK	REVISED
26	DK	REVISED
27	DK	REVISED



SHEET 55

SHEET 53

SHEET 66

SHEET 65

NEW JERSEY DEPARTMENT OF THE TREASURY
 DIVISION OF TAXATION
 PROPERTY ADMINISTRATION
 APPROVED AS A TAX MAP PURSUANT TO THE AUTHORITY OF
 N.J.S.A. 54:1-5 & 54:1-6
 FOR THE DIRECTOR, DIVISION OF TAXATION
James S. Galt C.T.A.
William H. Elmer C.T.A.
 DATE: MAY 4 - 2000 SERIAL NO. 789

TAX MAP
 TOWNSHIP OF NORTH BRUNSWICK
 MIDDLESEX COUNTY, NEW JERSEY
 SCALE : 1" = 100' JUNE 1998
 RAYMOND E. BORUP JR., P.L.S.
 CME ASSOCIATES
 3141 BORDENTOWN AVENUE, PARLIN
 NEW JERSEY, 08859